



OAKFIELD



Maitland Close, Hastings, TN34 2TR

£1,275 Per Calendar Month





## Maitland Close, Hastings, TN34 2TR

Situated in a quiet cul-de-sac in Hastings, this well-presented two-bedroom terraced house offers comfortable living in a peaceful setting. The property has recently been redecorated throughout.

Downstairs features a modern kitchen that flows into a spacious living area, complemented by sliding patio doors that open out to a generously sized rear garden—perfect for relaxing or entertaining. To the front, there's a well-maintained grass area adding to the property's kerb appeal.

Upstairs, you'll find two good-sized bedrooms along with a family bathroom, which includes a shower over the bath.

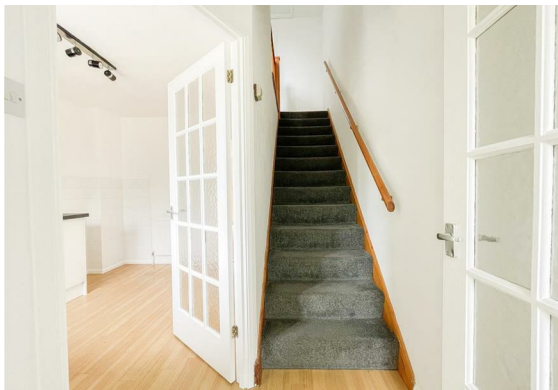
Additional benefits include one allocated parking space and the property being located in a calm residential area, making it ideal for couples or small families.

Please note:

An annual household income of £38,250 will be required for the affordability criteria of this property.

The minimum tenancy length is 12 Months.

Available mid August 2025.







### Living Room

13'9" x 11'9" (4.20m x 3.60m )

### Kitchen

11'9" x 8'6" (3.60m x 2.60m )

### Bedroom One

11'9" x 9'6" (3.60m x 2.90m )

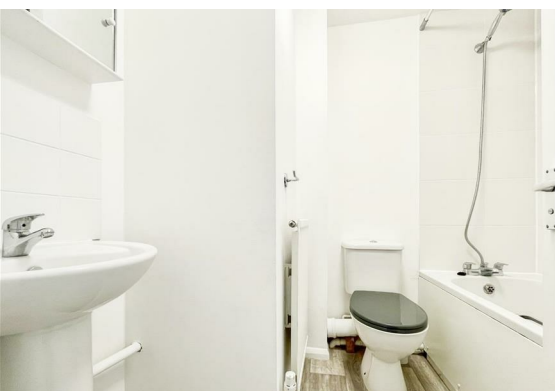
### Bedroom Two

11'9" x 9'6" (3.60m x 2.90m)

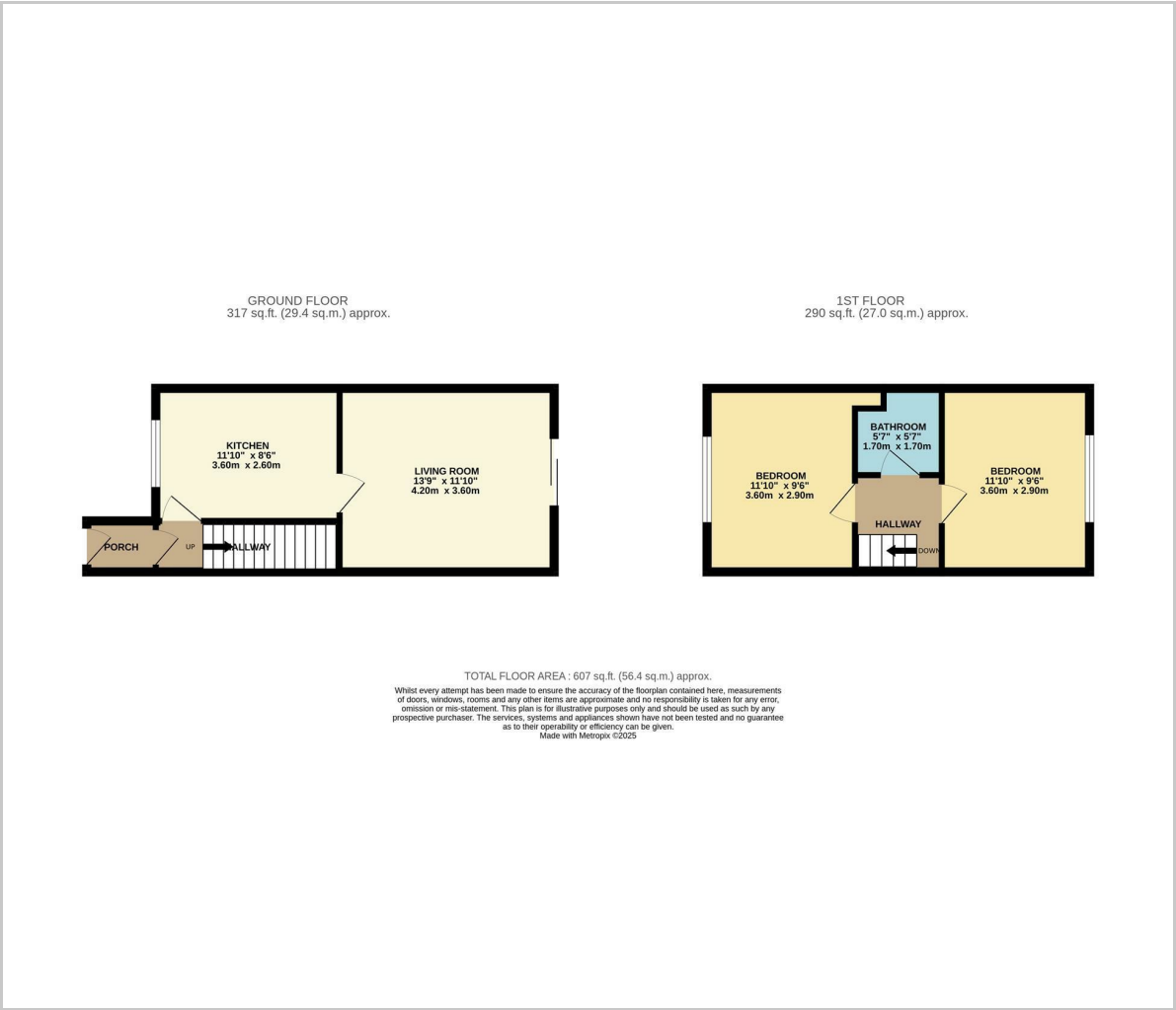
### Bathroom

5'6" x 5'6" (1.70m x 1.70m)

**Council Tax Band B - £1,986.55 Per Annum**



Floor Plan

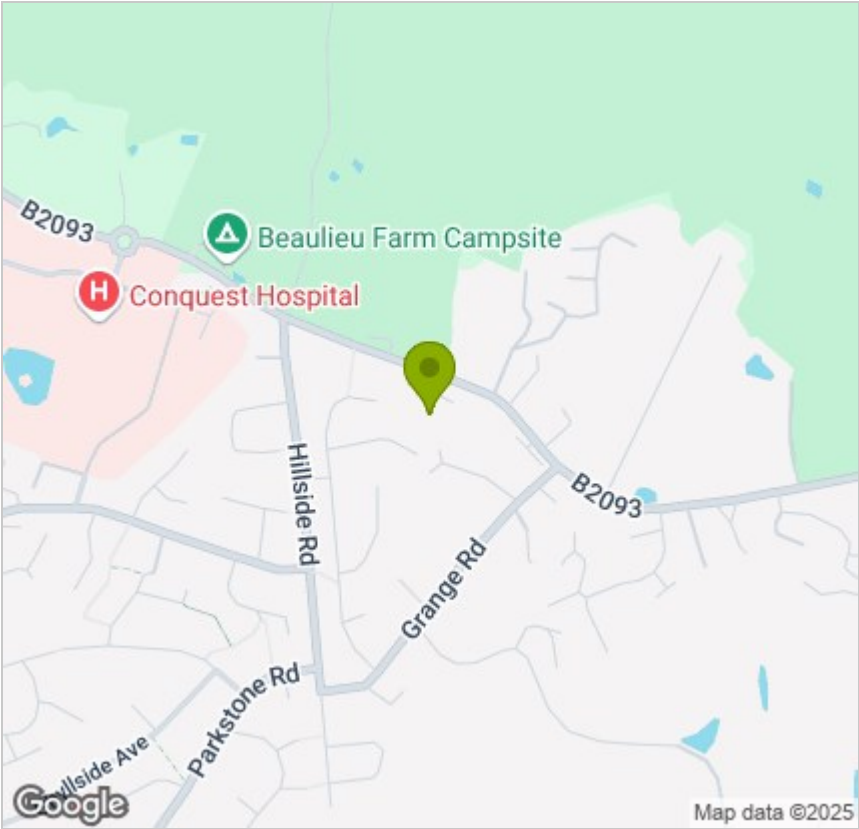


Viewing

Please contact us on 01424 446644 if you wish to arrange a viewing appointment for this property or require further information.

These particulars, whilst believed to be accurate are set out as a general outline only for guidance and do not constitute any part of an offer or contract. Intending purchasers should not rely on them as statements of representation of fact, but must satisfy themselves by inspection or otherwise as to their accuracy. No person in this firms employment has the authority to make or give any representation or warranty in respect of the property.

Area Map



Energy Efficiency Graph

